

# Class Rule Changes

## International Melges 24 Class Association

Effective date: 21/12/2017

Approved by: JND

### ONE:

#### Front Page and Index

World Sailing logo updated. Index amend to read:

H.2	Fittings .....	32
H.3	Crew Weighing .....	40
H.4	Bow Numbers.....	40

### TWO:

#### C.5 EQUIPMENT

##### C.5.2 NOT FOR USE

Old:

##### (a) MANDATORY

(1) One functioning outboard engine and bracket:

2 stroke minimum nominal power – 2kw (3hp)

4 stroke minimum nominal power - 1.46kw (2hp)

Electric outboard of minimum power 450kw

Minimum engine weight empty of fuel – 12.5kg

Amend to read:

##### (a) MANDATORY

(1) One functioning outboard engine and bracket:

2 stroke minimum nominal power – 2kW (3hp)

4 stroke minimum nominal power - 1.46kW (2hp)

Electric outboard of minimum power 1kW output wattage

Minimum engine weight empty of fuel – 12.5kg

### THREE:

#### C.7.2 FITTINGS

Old:

##### (a) USE

(5) The hiking lines shall be tight at all times. When pushing down hard on the hiking line, the hiking line shall when measuring from the deck to the top of any padding on the hiking line not measure less than 100mm in the lowest position between the two stanchions.

Amend to read:

##### (a) USE

(5) The hiking lines shall be tight at all times. The distance between the top of the bearing point of the lifeline straps and the deck shall be no closer than 10 cm when a 20 kg load is placed at mid-span.

## Class Rule Changes

### International Melges 24 Class Association

Effective date: 21/12/2017

Approved by: JND

#### FOUR:

##### H.2 FITTINGS

Old:			
1 or 2 cleats on brackets on each side tank for traveller control line			The traveller cleats may be placed within a box measuring 1900mm and 2150mm aft of the Measurement Beam and between the lower edge of the deck non skid and a line 180mm below this edge on the cockpit moulding.
Amend to read:			
1 or 2 cleats on brackets on each side tank for traveller control line			The traveller and <b>backstay</b> cleats may be placed within a box measuring 1900mm and 2150mm aft of the Measurement Beam and between the lower edge of the deck non skid and a line 180mm below this edge on the cockpit moulding.

#### FIVE:

Old:			
Eye bolt at outer end of bowsprit			See C.9.5.(b)
End block on eye bolt	Dia optional		Only working sheeve
End block on eye bolt	Distance from the bowsprit surface to the lowest point of the sheave race shall be not less than 40mm		
Amend to read:			
Eye bolt/ Fairlead at outer end of <b>bowsprit</b>			See C.9.5.(b)
End block, ring or timble	Dia optional		Only working sheeve
End block, ring or timble			The way to fix the tack is optional. The tackline shall be leaded through a optional fitting which shall be attached to a fairlead mounted along the <b>bowsprit</b>

## Class Rule Changes

### International Melges 24 Class Association

Effective date: 21/12/2017

Approved by: JND

#### SIX:

---

### H.3 CREW WEIGHING

Old:

Crews shall be weighed during the registration period prior to racing. During the event, Crews will be selected at random to be reweighed. Such reweighting shall be done on the same scale and at the same place and within one (1) hour of the end of the protest time limit of the last race of the day. Should a boat be found to exceed the maximum weight, she will be penalized by adding one point for each race of the day to her final total score - after discards - of the regatta for every kilogram over the limit. A boat found over the weight limit shall not continue racing until she complies with the class rule. Re-weighing under this situation shall be at the discretion of the Race Committee.

Amend to read:

**Crews** shall be weighed during the registration period prior to racing. During the event, **Crews** will be selected at random to be reweighed. Such reweighting shall be done on the same scale and at the same place and within one (1) hour of the end of the protest time limit of the last race of the day. Should a **crew** be found to exceed the maximum weight (**Class Rule C.2.2.**), she will be penalized by adding the following points for the final total score of each race of the re-weighing day in which she raced and finished, as follows:

375 kg < weight ≤ 376 kg: 1 point;

376 kg < weight ≤ 377 kg: 2 points;

377 kg < weight ≤ 378 kg: 3 points;

Etc.,

A **crew** found over the maximum weight (**Class Rule C.2.2.**) shall not continue *racing* until she complies with the **class rules**. Re-weighing under this situation shall be at the discretion of the *Race Committee*.

#### SEVEN:

---

Add:

### H.4 BOW NUMBERS

#### H.4.1 RACING STANDARDS:

- a) When Bow Numbers are required by Notice of Race (NOR) for International Melges 24 Class one design race events, the bow numbers shall conform to the class standards, as stated in H.4.1 through H.4.8.
- b) Bow Numbers shall correspond to the number on the ISAF / World Sailing building plaques. **Boats** with **sail** numbers prior to 350 shall carry the number as issued by Melges Performance Boatworks.

#### H.4.2 FONT:

- a) Shentox Bold is the font that shall be used.
- b) Slant/Rake/Angle of font: 10 Degrees. The top of the Numbers shall angle back, away from the bow.

## Class Rule Changes

### International Melges 24 Class Association

Effective date: 21/12/2017

Approved by: JND



- c) There shall be separate starboard and port numbers, as the slant/rake/angle starts from a different end, for each hull side.
- d) Kerning or spacing between numbers: To preserve uniformity, the graphic art creation of numbers with spaces kerned, shall be performed by a class approved graphic technician.

#### H.4.3 NUMBER DIMENSIONS:

- a) Numbers shall be 3 digits. In the event of a boat hull number being 1 or 2 digits, a 0 or 00 will be added in front, such as; 009, for hull #9, or 011 for hull #11.
- b) Height: 32.0cm ( 12.5") +/- 1.0cm
- c) Length: 72.5cm ( 28.5") +/- 2.5cm
  - a) Thickness of the body of the number is controlled by the font, Shentox Bold.

#### H.4.4 NUMBER COLOR:

- a) On a white Hull, Number colour shall be RED. On a red hull, Number colour shall be WHITE. On other colours of hulls, number shall be RED, unless it is an insufficient contrast to provide immediate identity, in which case it shall be WHITE.
- b) Colour shade shall be as specified in H.4.8 (Material).

#### H.4.5 SEPARATOR LINE:

- a) The use of the Separator Line is discretionary. However, if used, it shall be used in conjunction with the Melges24 Inscription Banner, (H.4.6) and, shall comply with the points following.
- b) Line Height/thickness; 5.0mm (0.18") +/- 1.0mm
- c) Line Length shall visually match the length of the Numbers, or: 72.5cm (28.5") +/- 2.5cm
- d) Space distance between top edge of Separator Line, and bottom edge of Numbers: 3.0cm (1.2") +/- 0.5cm
- e) Colour shall be matching to the numbers.
- f) Colour shade shall be as specified in H.4.8 (Material).

#### H.4.6 MELGES 24 INSCRIPTION BANNER:

- a) The use of the Melges24 Inscription Banner is discretionary. However, if used, its content shall be used in conjunction with the Separator Line (H.4.5), and, shall comply with the points following.
- b) Use of an approved Melges24 Wordmark shall be contained in the Banner, when the Banner is used.
- c) Spacing between the bottom edge of the Separator Line, and the top-most edge of the inscription, shall be the same distance as between the separator line and the Bow Numbers, at: 3.0cm (1.2") +/- 0.5cm

## Class Rule Changes

### International Melges 24 Class Association

Effective date: 21/12/2017

Approved by: JND

- d) Height of the letters and numbers in the Banner shall be 4.5cm (1.75") +/- 0.5cm.
- e) The length of the banner inscription is discretionary; however, placement shall not be forward of the vertical extended plane of the furthestmost edge of the Numbers, and,
- f) Colours shall be matching to the Bow Numbers in either Red, or White.
- g) A trim colour may be used, the trim colour shall be in either; Red, White, or Black.
- h) Colour shades shall be as specified in H.4.8 (Material).
- i) Overall Height of Numbers with Separator Line and Melges24 Banner inscription; 42.0cm (16.5") +/- 1.5cm

#### H.4.7 NUMBER PLACEMENT:

- a) Numbers shall be placed in the bow area of the hull, on both port and starboard sides.
- b) The top edges of the Numbers shall be placed parallel to the deck surface.
- c) Distance below the sheer of the deck surface; The top edges of the Numbers, shall be below the deck surface at a distance of; 16.5cm (6.5"), +/- 1.0cm
- d) Distance aft of bow: The most forward edge of the numbers, shall be placed at a vertical line, drawn perpendicular to the deck surface at a distance of 20cm (8.0"), +/- 1.5cm aft of the stem.
- e) Sponsor or event stickers shall be placed below the deck surface at a minimum distance of 16.5cm (6.5"), and, 20cm (8.0") aft of the furthest aft edge, of the Numbers and/or Melges24 Inscription Banner.

#### H.4.8 MATERIAL:

- a) Material shall be of a high quality, exterior grade graphic vinyl, of pressure sensitive adherence, similar, or equal to; 3M 180C Controltac Graphic Film or 3M IJ35 Scotchcal Graphic Film.
- b) Material shall have a life span rating that is 5 years or greater.
- c) Red material shall be; a solid colour matching to 3M 180C in #53 Cardinal Red, or Pantone PMS 186 Red.
- d) White material shall be; a solid colour matching to 3M 180C in #10 White, or a solid white colour with no tint or hue.
- e) Black material shall be; a solid colour matching to 3M 180C in #12 Black, or a solid pure black colour with no tint or hue.
- f) The material shall be of a quality that can be removed without damage or undue effort or maintenance to the hull.

# Class Rule Changes

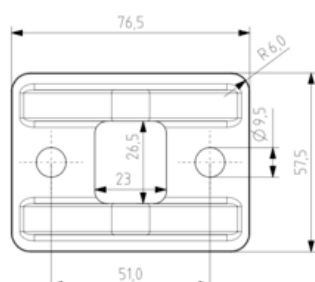
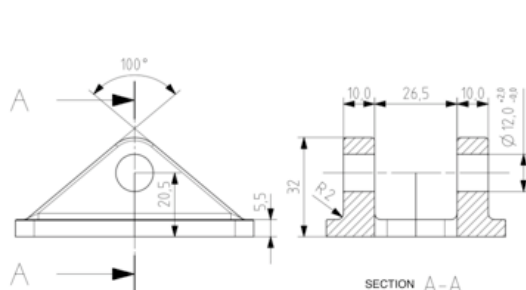
## International Melges 24 Class Association

Effective date: 21/12/2017

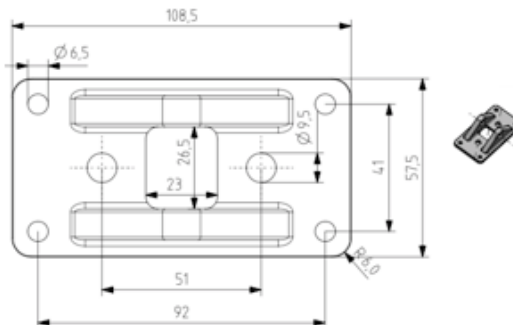
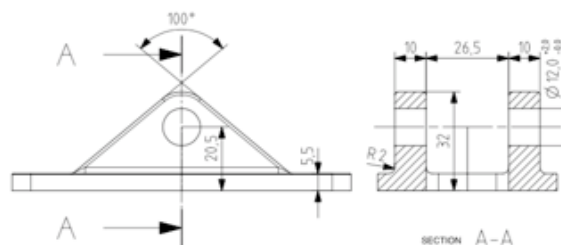
Approved by: JND

### EIGHT:

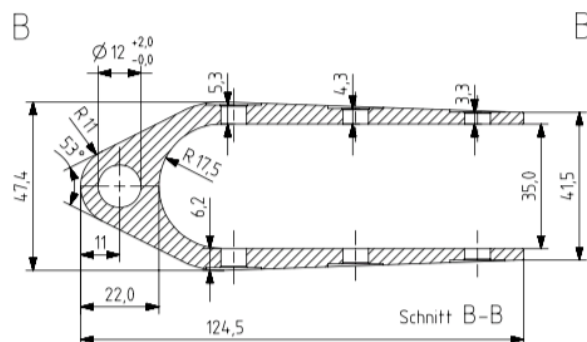
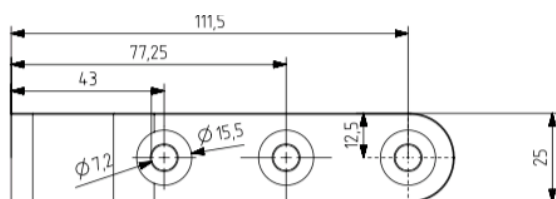
Amend to update following images:



Original Rudder Gudgeon



Optional replacement Rudder Gudgeon



Optional replacement Rudder Fitting

END